

The study of symbols or symbology.

Volume 1

Introduction

Look carefully at this kami symbol. It can be found upon a banner of the kami temple of the Imperial Dunes.



Now look at this other symbol, which is found on some coats of arms of guilds, which yet are not necessarily kamist ones.



But also here, a related symbol, on the Trykker tents of the Root Tappers tribe.



Don't you find some similarities? This circle, these branches, one larger at the bottom and one shorter at the top. Some would say it looks like an avian spreading its wings. I say that this symbol is inspired by the Kamis, who may have drawn it

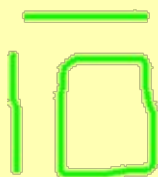
from Atys itself. As if they were different symbols coming from a single source and reshaped according to the culture of each people.

So, I venture the following hypothesis: no symbol found on Atys, be it specific to a people or a tribe, owes nothing to chance. They all have their origin in Atys itself. Whether by its fauna and flora, or by the presence of Kami and Karavan. All these symbols tell a story, our history, our origins. And it's only up to us to decipher these symbols. That is what this book is buckling down to. It is by no means exhaustive of all the symbols we can find while traveling the world. But it is an attempt to provide a first overview and to put forward a few hypotheses that some people may find bold when others will be content to deny them with a shrug. It's a new science that I'm trying to open up with you today: symbology.

When Atys is talking to us...

Cast an acid spell on an animal. What do you see above the animal?

This symbol:



A square, and two bars, one at the top, the other on the left. This can vary, because this symbol can be seen from different points of view, sometimes with the bar at the top, sometimes at the bottom.

The same symbol comes back when you are the one who is suffering a spell, for example a slaveni or shooki attack. And most curious of all, it is impossible to take a lucio of this symbol. As if it only exists in the reality of the one who is using or undergoing the magic. As if, in the end, the symbol only exists through magic.

And yet, this symbol, you've already seen it elsewhere. Perhaps not quite the same one, but it speaks to you.

Yes, you guessed it, it's found among Zorai, this people of the Jungle, probably closer to Atys than any other.

Just look at the following pictures of that you can see in Zora, the capital city of the Theocracy, to convince yourself.



Everything in the culture of the Theocracy is shot through with this symbolism of the square. Even in their architecture, one can see this symbolism of straightness and right angle.

Were the first builders inspired by this magical symbol that they saw the first time they cast a spell? We know that Zoraï builders were given the help of Karavan technology, such as magnetism, to build their cities.

It was a time when Zoraï were not yet in bad terms with Karavan. But by studying this magical symbol of a square with two bars on the sides, I think Zoraï were also inspired by it. There's no accident here. The coincidence is just too damn strong.

That's just a first example of a troubling similarity. There are many others.

Now, cast a more powerful spell, such as a fire or cold spell.

You'll see a myriad of symbols appearing. We find our first square symbol, but there are others that I will try to restore you through the drawing.

For a start, the spiral.



It's the easiest one. I'm sure you've seen this symbol somewhere before.

To help you, here are some lucios.

The first one was taken in the ruins of Leron. Traced under the moss that covers them, these symbols are probably more recent than the time of Leron, when the ancient city was used as a refuge for members of the Dragon cult once they were driven out of Desert. The presence of Tryker bandits near the ruins seems to show a Tryker origin to this symbol.



Even more obvious is this symbol found on the throne in Fairheaven. Yes, another Tryker symbol.



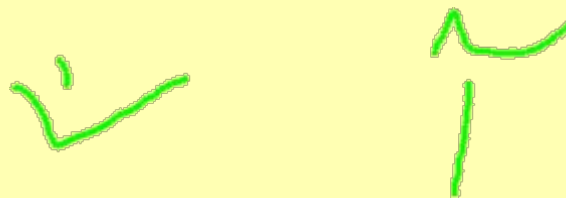
Sure, there are differences, but you have to admit that the similarity is astonishing. Did the Tryker see it as a whirlpool, like those you can create in the water with your finger? Or is it the symbol of the spiral that you see when you cast a spell specific to the Tryker nation? Or to its environment? We know that the raw materials found in the Lakes are different from those found in the Desert, the Forest or the Jungle. The Prime Roots also constitute a world apart. This symbol of the spiral of Tryker culture can be found there, and knowing that the Tryker live in a lake biotope, we could infer that this symbol is specific to this biotope. However, a counter-example is a challenge to this hypothesis.



The spiral can also be found in Yrkanis, at a tool merchant. Influence of the salesman by the Tryker culture? I don't know, my relations with Matis not being particularly constructive...

Let's assume, however, that the four symbols you see when casting a powerful spell are biotope-specific. That Atys and Kamis, from which we derive our magic, are thus trying to transmit a part of what makes up the essence of our world. We have already found the symbol of the lake and jungle biotopes. If our hypothesis is correct, we can deduce that the other two are specific to the Desert and the Forest.

Let's together analyze these symbols.



Both might bring to mind roots. When we say flora, we immediately think of the Matis, who became experts in vegetal science. But we all live in a vegetal world. And I don't know enough about Matis culture and symbolism to go into that. These two symbols are also reminiscent of what we see in Fyros culture. I will detail the Fyros symbolism below.

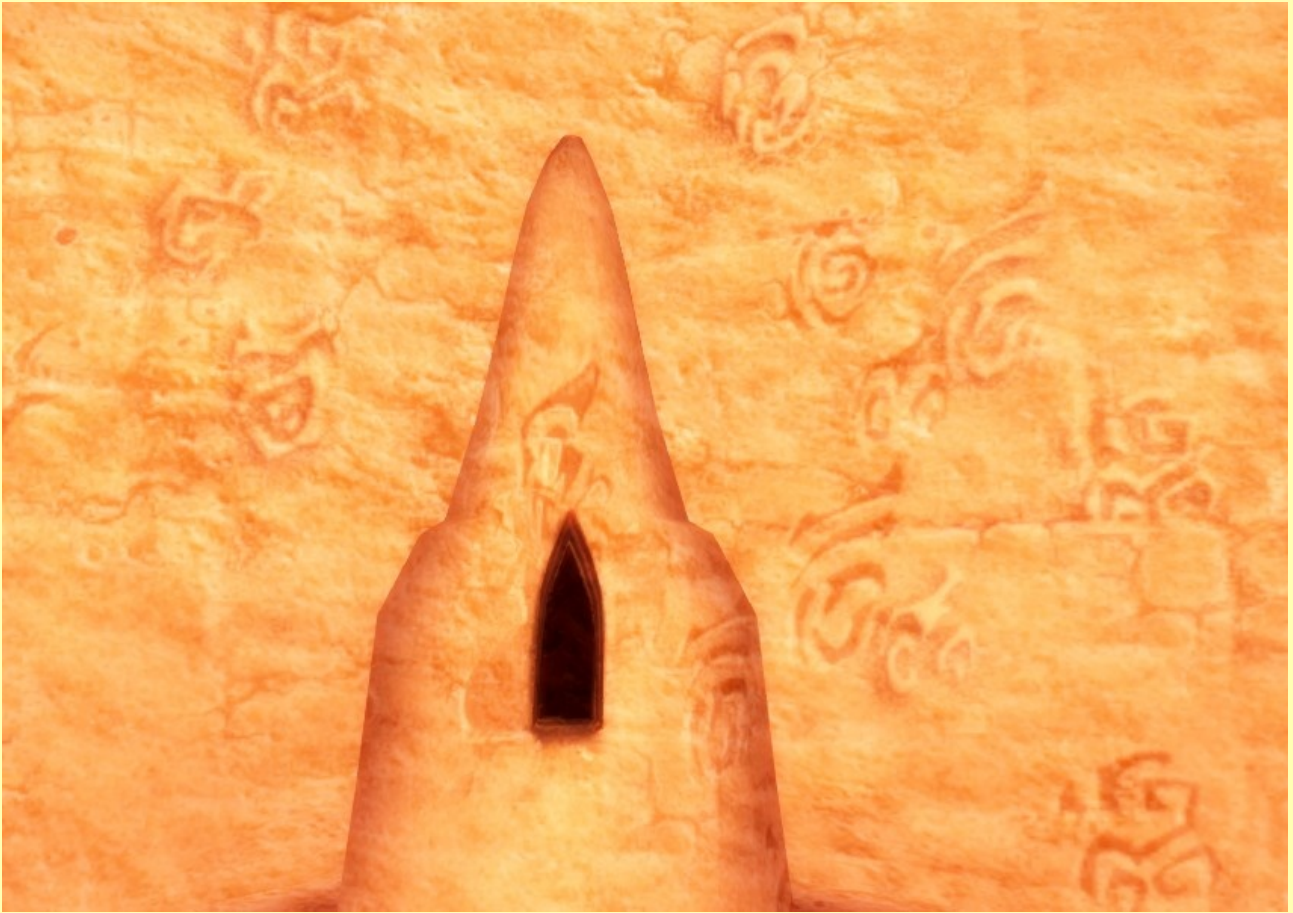
The smoke

People of the Fire, the Fyros devote to it an important cult. It is therefore not surprising that Fyros symbolism is largely inspired by smoke. One only has to examine the Fyros symbol to be convinced of this. It is all curved and seems to portray a volute of smoke that rises up and eventually twists around itself.



The symbols drawn on the walls of Cerakos and Arispotle avenues in Pyr are characteristic of this "Fyros pattern".





Fire-inspired symbols can also be found elsewhere in Fyros culture. On buildings for example.

Here some bas-reliefs.



There some door frames.



One of the two magical symbols may therefore be a link to the desert biotope. The fascination for the fire of the Fyros could thus come from the fact that this symbol (one or the other) breathes in every Fyros of sap. It pushes us towards Fire, it is fire. According to Fyros mythology, a great Dragon would sleep in the depths of Atys. This tenacious myth would thus find its origin in what sleeps under our desert biotope: a source of fire, in the form of a dragon or a great blaze.

The fifth symbol

What about Prime Roots? They constitute a biotope too. I would even say that they form a biotope of their own, to be placed in a different category from the other four. Indeed, it is the only one where supreme materials can be found. If my hypothesis is correct, it would be logical that it also has its own symbol.

It is particularly difficult to observe the symbols one sees when using magic. The symbols are also sometimes nested within each other. It would then be better to already know what you are looking for. To do this, let's go back to our Fyros symbolism. Fyros are drillers. There is no people who know the bowels of Atys better than Fyros. I put forward the hypothesis that there is thus no people better positioned to have already seen and felt this symbol of the Prime Roots.

Geometrical figures

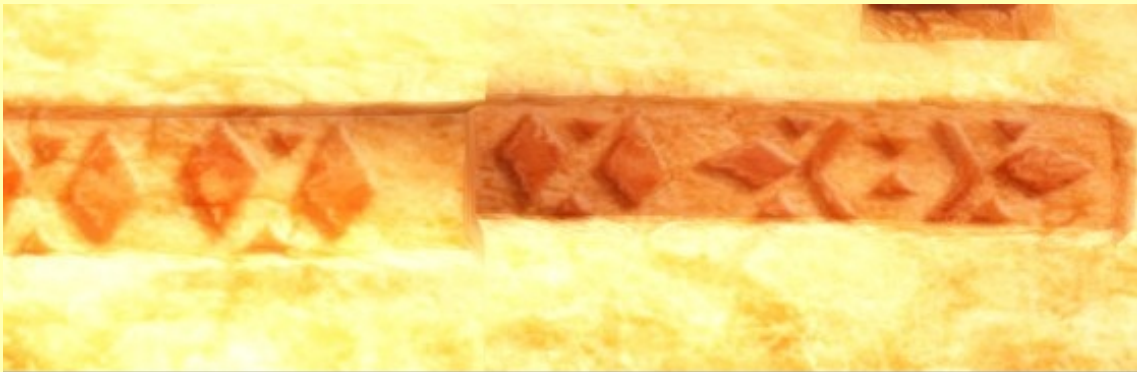
When the "Fyros pattern" is not of flame and smoke, it becomes geometrical. There are triangles, here rhombs, all in symmetry and rigor, as if inspired by an all-military discipline. But perhaps also by the symbol of the Prime Roots.

Some roads...

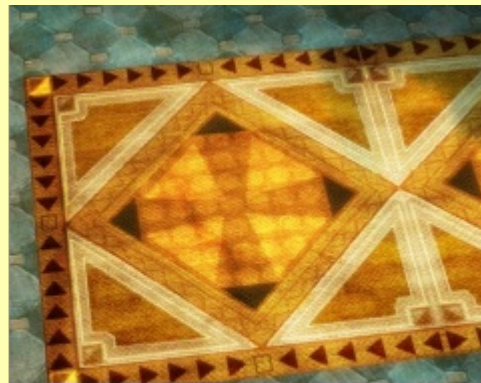


That said, one weakness as far as roads are concerned. These were laid out by the Barkers tribe using Karavan technology. Maybe these symbols are just traces left by the machines.

Some friezes...



Some rugs and paving...



Could the symbol of the Prime Roots be found among these geometrical figures? Then we would have to look for a geometric symbol other than the Zoraï square. A rhomb or a triangle perhaps.

Another idea is to take inspiration from Kamis symbols. I've already talked about this kind of avian. Another Kami symbol lays in the Forbidden Depths, at Midway Point. It is said that there a secret tunnel leads to the Deep Prime Roots. There's a strange spring there, guarded by the Kamis.

On the bark is engraved this symbol:



Could this be the much sought-after symbol? It's quite possible. However, I've tried every spell in the book, but to no avail. No symbols other than the first four never appeared. If this symbol can appear, it probably requires the use of extremely powerful magic.

To be continued...

That's the quest for this symbol, but also the attribution of the two symbols to the biotopes of the Desert and the Forest that the next volume will tackle. We will also talk about the Karavan symbols and strange writings. In the meantime, I will be happy to share my knowledge with yours, in writing or orally.

So don't hesitate to write to me if you think you have an idea about the symbol of the Prime Roots or the right symbols of Desert and Forest.

talum lekùch sharùch (knowledge gives power)

Azazor Eridlo Mirihus, akenak of Thesos and talumetimetos in the Chamber of Truth (Chair of Knowledge) of the Imperial Academy.

